

C2 – EMOTIONAL SOVEREIGNTY

Emotional-Territorial
Intelligence

The will to power

chaosurfer



CONTENT

1. THE CIRCUIT

2. MALFUNCTIONS

3. INTELLIGENCE INCREASE

4. YELLOW MAGICK

5. THE QUEST





C2: EMOTIONAL SOVEREIGNTY

Monkey Brain
Lymbic System

Basic Program
Dominance/Submission
Agression/Cooperation

Substance:

Alcohol



C2: EMOTIONAL SOVEREIGNTY

Needs:

- Ego strength
- Territorial ownership
- Boundaries
- Self-Importance
- Status
- Security
- Control

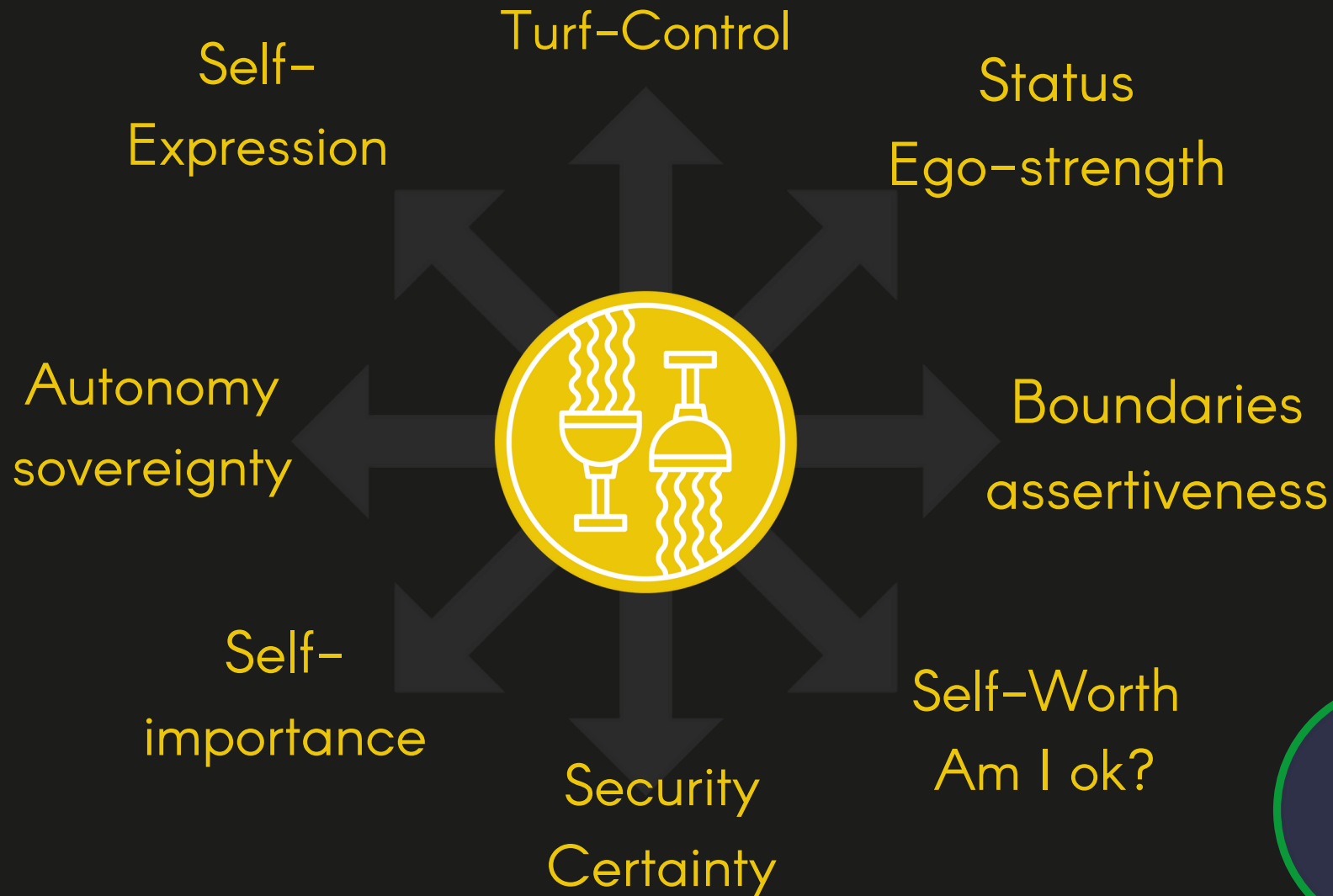


Imprint
Toddler



Security

RECLAIM SELF-TRUST





AM I OK?

Please love me!

Validation

Approval





I AM

Lovable

Enough

Worthy





STATUS

knowing your position
and where the power is

what makes you feel
important and special

how will you receive
recognition?

SELF-DEFINITION OF

**STATUS, POWER,
SUCCESS, WINNING**



RECLAIM SOVEREIGNTY

E-Motions

Will to power
self-dominion

Investements

Permission

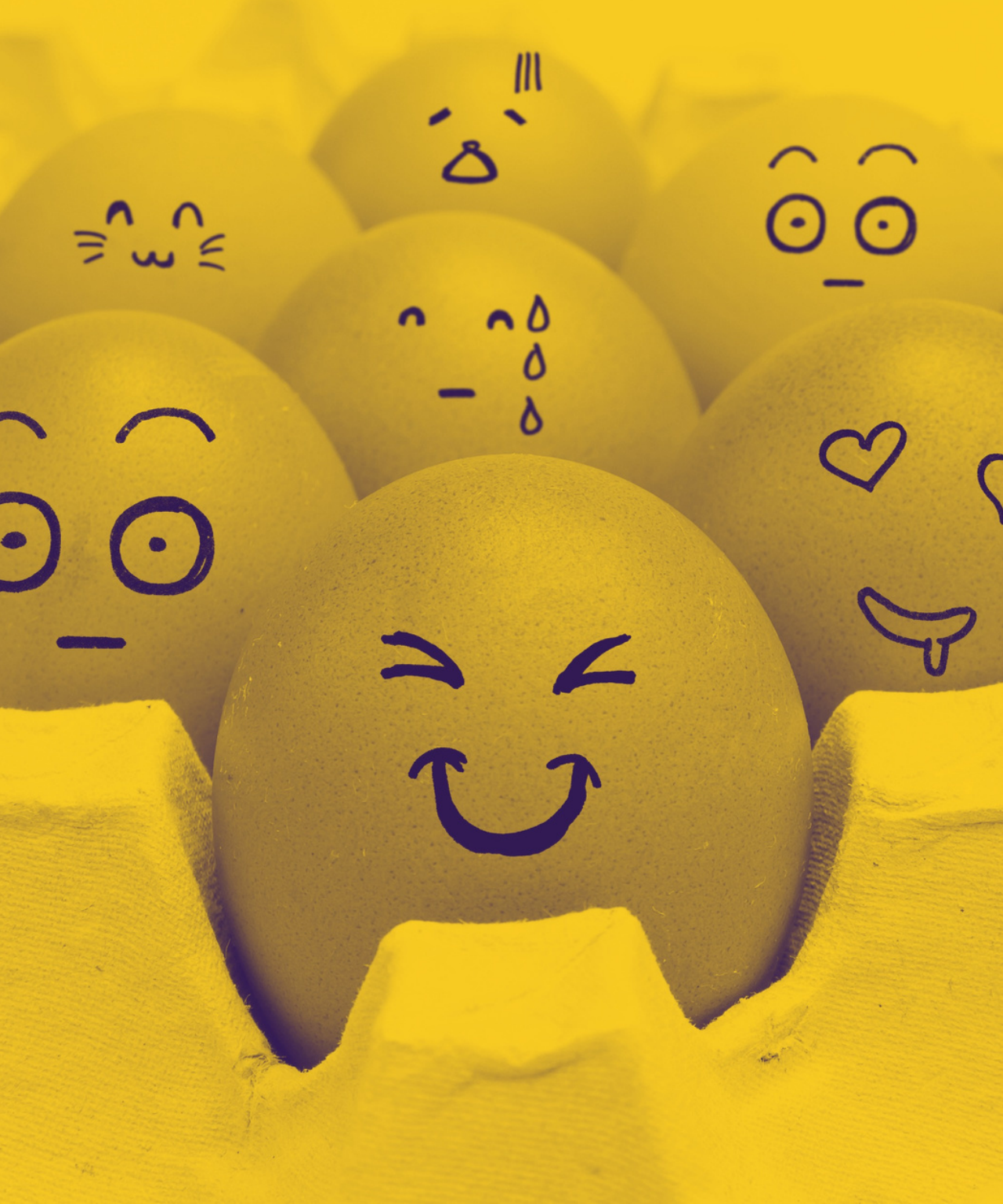
Self-
Approval

Motivation
Convictions

Attachments

Feelings





E-Motions as signals
for territorial needs

meet the needs to
stabilize Ego-strength

sense of self or territory
gets diminished
or augmented



ENERGY IN MOTION



You can use emotions as
compass....and as source of
power to...

AND CAST SPELLS!





NUMBNESS BAR

